



Empowering Inclusion. Introducing the **NeuroPod**.



NeuroPod, a gamechanging innovation that's redefining inclusivity and empowering neurodiverse individuals to thrive

Gamechanger in Workplace Inclusivity



Crafted by the innovators at Future of the Office, the **NeuroPod** is a bold reimagining of what workplace solutions can achieve. As the first pod designed specifically for neuroinclusivity, the **NeuroPod** is an industry-first innovation that sets a new benchmark for inclusive design. It is more than just a workspace, it's a transformative tool that empowers neurodiverse individuals to perform at their best, while fostering a culture of inclusivity and innovation.

The **NeuroPod** is a gamechanger, offering a sensory-friendly, adaptable, and beautifully designed environment that meets the diverse needs of today's workforce. By combining cutting-edge technology, thoughtful design, and a commitment to inclusivity, Future of the Office has created a product that redefines what it means to support every individual in the workplace.

This is not just a pod, it's a movement towards a more inclusive, innovative, and future-ready workplace.

Rethinking Workspace

In today's rapidly evolving workplace, inclusivity is no longer a choice, it's a business imperative. With approximately 15% of the global population being neurodiverse, and this figure rising to as much as 50% in the tech industry, organisations must create environments that empower all employees to thrive. The **NeuroPod** is the first and only pod designed specifically for neuroinclusivity, setting a new standard for workplace innovation. It provides a safe, adaptable, and sensory-friendly space where neurodiverse individuals can perform at their very best, unlocking their unique talents and driving organisational success.

NeuroPod: The Future of Neuroinclusivity

The **NeuroPod** redefines the concept of inclusive workspaces. Unlike traditional meeting pods, the **NeuroPod** is a multi-functional, purpose-built solution that goes beyond aesthetics to address the specific sensory and cognitive needs of neurodiverse individuals. Whether used as a private workroom, a collaborative space, or a calming retreat, the **NeuroPod** is engineered to create an environment where focus, comfort, and creativity flourish.

This industry-first innovation is not just a product, it's a movement towards a more inclusive future. By integrating the **NeuroPod** into your workplace, you're not only supporting your employees but also positioning your organisation as a leader in diversity, equity, and inclusion.

Unlock Human Potential

Neurodiverse individuals bring exceptional strengths to the workplace, including unique problem-solving abilities, creativity, and attention to detail. However, traditional office environments often fail to accommodate their sensory and cognitive needs, leading to stress, disengagement, and reduced productivity. Research shows that inclusive workplaces are 21% more likely to outperform their peers, and organisations that embrace neurodiversity gain a competitive edge in innovation and talent retention.

The **NeuroPod** is designed to bridge this gap, providing a space where neurodiverse employees can thrive. By investing in neuroinclusive solutions, organisations can unlock the full potential of their workforce, foster a culture of belonging, and drive measurable business outcomes.

NeuroPod Range

The NeuroPod is available in a variety of configurations to suit diverse workplace needs:



- **Workroom Configuration:** A private, distraction-free "office in a box" for focused tasks, offering a quiet and controlled environment for deep work.
- **Collaboration Space:** A sensory-friendly environment for small group discussions, brainstorming sessions, or hybrid meetings, designed to minimise sensory overload while fostering creativity.
- **Calming Retreat:** A restorative space equipped with soothing soundscapes, ambient lighting, and ergonomic features, providing employees with a place to recharge and refocus.

*Each **NeuroPod** is fully customisable, ensuring it integrates seamlessly into your workplace while meeting the specific needs of your team.*

Inclusive by Design: Key Features

The NeuroPod is available in a variety of configurations to suit diverse workplace needs:

Sensory-Friendly Lighting

- **Customisable Lighting:** Fully adjustable task and ambient lighting, allowing users to personalise the colour, temperature, and intensity to suit their preferences.
- **Calming Atmosphere:** Designed to reduce sensory overload and create a focused, soothing environment.

Advanced Acoustic Insulation

- **Three-Layer Insulation:** Best-in-class 3-layer insulation system that delivers superior noise reduction, including a visco-elastic membrane, to attenuate airborne noise and vibrations.
- **Distraction-Free Environment:** Creates a quiet, controlled space ideal for focus and collaboration.

Integrated Sound System

- **Built-In Speakers:** Offers a range of soundscapes, including calming sounds (waves, wind, rain), white noise, or music.
- **Personalised Auditory Experience:** Supports focus, relaxation, or creativity with tailored sound environments.

Customisable Design

- **Flexible Configurations:** Tailored to meet diverse workplace requirements, the **NeuroPod** can be adapted for private work zones, collaborative hubs, or calming retreats, ensuring it fits seamlessly into any environment.
- **Infinite Colour Choices:** Offers limitless possibilities for customisation, allowing buyers to select colours and finishes for both the interior and exterior. Whether you prefer calming neutrals, vibrant tones, or a completely unique palette, the **NeuroPod** can be designed to create an environment that feels safe, welcoming, and supportive for the user.
- **Personalised Branding and Finishes:** Options for branding, interior finishes, and additional features ensure the **NeuroPod** aligns with your organisation's identity while meeting the specific needs of your team.

Neuroinclusive Features

- **Thoughtful Design:** Specifically created to support neurodiverse individuals, with features like sensory-friendly lighting, soundproofing, and ergonomic layouts.
- **Psychological Safety:** Promotes well-being and empowers employees to perform at their best.

Biophilic Design

- **Natural Elements:** Incorporates greenery, natural materials, and biophilic features to enhance well-being, reduce stress, and foster a connection to nature.
- **Health and Productivity Benefits:** Biophilic design has been shown to improve focus, creativity, and overall employee satisfaction.

Aesthetic and Soft Design

- **Sleek, Modern Aesthetics:** Features a contemporary design with soft, rounded edges that create a welcoming and calming environment.
- **Seamless Integration:** Blends effortlessly into any workplace, complementing existing interiors while maintaining a professional and polished appearance.

ESG That Rocks

At Future of the Office, we view ESG (Environmental, Social, and Governance) not merely as a framework but as a fundamental commitment that shapes our operations and product development. We believe that integrating sustainable practices into our business model is essential for creating a positive impact on the world. However, we do more than just implement sustainable practices; we actively embrace diversity, equity, and inclusion (DEI) as core values that drive our innovation and progress. Our **FuturePod** products are designed with these principles in mind, ensuring that we contribute to a better future for all while fostering an inclusive environment that celebrates the unique perspectives of our diverse team.



Environmental Sustainability

Our commitment to environmental sustainability is reflected in every aspect of **FuturePod's** design and manufacturing processes. We prioritise eco-friendly materials and practices to minimise our ecological footprint:

- **FSC-Certified Timber:** All timber components are sourced from FSC-certified sustainable sources, ensuring responsible forest management and conservation of biodiversity.
- **MDF Panels:** The MDF panels used in the construction of **NeuroPod** are produced from waste timber material. These fireproof MDF panels offer a durable, high-quality product while minimizing waste.
- **Acoustic Carpet:** The carpeting in **NeuroPod** is made from 80% post-consumer recycled PET bottles. Acoustically rated at 20-30dB, the carpet not only promotes sustainability but also actively enhances the sound insulation properties of the pod.
- **Close-to-User Manufacturing:** **NeuroPod** is produced locally, significantly reducing transportation distances and emissions, which aligns with our goal of creating a more sustainable solution.
- **Flat-Pack Delivery:** Our innovative delivery method reduces emissions and ensures that even the smallest spaces can accommodate a **NeuroPod**, promoting efficient use of resources.



Social Responsibility

At Future of the Office, we recognise that our diverse team is one of our greatest assets. We believe that the distinct perspectives brought by individuals from various backgrounds, whether they are neurodiverse, introverted, extroverted, or from different cultural backgrounds, drive innovation and progress. We proudly embrace gender diversity and LGBTQI+ inclusion, understanding that these differences are not something to hide; they are, in fact, the very things that set us apart and allow us to bring something extraordinary to the table.

Our commitment to diversity is encapsulated in our ethos around the "Power of Difference." This philosophy empowers us to start from a different place, ask different questions, and achieve better results. It is our outstanding team that enables this innovative approach, fostering an environment where everyone can thrive. We live, eat, and breathe DEI (Diversity, Equity, and Inclusion):

- **Neuro-Inclusive Features:** Our products are designed with adjustable lighting (both colour and temperature) and soundproofing to create sensory-friendly environments that empower neurodiverse individuals to thrive.
- **Wheelchair Accessibility:** Specific models of **NeuroPod** are designed to include ramps and spacious interiors, making our products accessible to all users.
- **Inclusive Design:** Thoughtfully crafted to ensure that **NeuroPod** is a welcoming and accessible space for everyone, we promote diversity and inclusivity through our supplier partnerships and our own diverse operations.



Governance

Governance is a critical aspect of our commitment to ESG principles. We strive to maintain the highest standards of ethical conduct and accountability in our operations:

- **Supply Chain Inclusivity and Diversity:** We partner with diverse, local suppliers who share our ESG values, our commitment to DEI, and oppose modern slavery. This ensures ethical sourcing practices and supports local economies.
- **Ethical Business Practices:** We adhere to strict ethical guidelines in all our business dealings, ensuring that our operations are transparent and accountable.
- **Diversity in Leadership:** We are committed to fostering diversity at all levels of our organisation, including leadership positions, to ensure that a variety of perspectives inform our decision-making processes.
- **Stakeholder Engagement:** We actively engage with our stakeholders, including employees, customers, and suppliers, to gather feedback and ensure that our practices align with their values and expectations.
- **Continuous Improvement:** We regularly assess our ESG practices and seek opportunities for improvement, ensuring that we remain at the forefront of sustainable and responsible business practices.



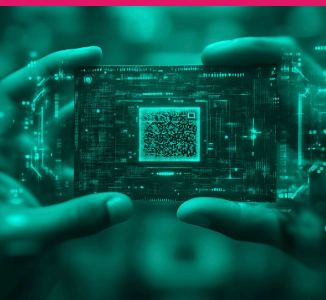
Traceability

Transparency is a cornerstone of our operations. We believe that our customers have the right to know the origins of the products they purchase, which is why we have implemented a robust traceability system. Our unique traceability code allows owners to scan a QR code located on each pod, providing instant access to a wealth of information about their **FuturePod**.

When scanned, the QR code reveals the complete story behind each pod, including:

- **Design Details:** Information about the design process, including the inspiration and considerations that went into creating a functional and aesthetically pleasing space.
- **Build Process:** Insights into the craftsmanship and techniques used during manufacturing, highlighting the skilled artisans and workers involved in bringing each pod to life.
- **Materials Used:** A comprehensive breakdown of the materials sourced for the pod, emphasising our commitment to sustainability by showcasing the use of recycled and eco-friendly components.
- **Origin Information:** Details about where the materials were sourced and the local suppliers involved in the production process, reinforcing our dedication to supporting local economies and ethical sourcing practices.

By simply visiting futurepod.info, customers can explore the origin of their **FuturePod** in greater depth, including interactive features that illustrate our commitment to sustainability and ethical practices. This transparency not only reinforces our accountability in the supply chain but also empowers our customers to make informed choices that align with their values.



Our commitment to ESG principles is not just a statement; it is a way of life. By embracing our differences and fostering an inclusive environment, we can drive innovation and create products that truly make a difference. Together, we are building a sustainable future for all.



Why Choose the **NeuroPod**?

The **NeuroPod** is more than just a pod, it's a statement of your organisation's commitment to inclusivity, innovation, and employee well-being. By choosing the **NeuroPod**, you're investing in:

- **Employee Empowerment:** Providing a space where neurodiverse individuals can thrive, unlocking their full potential.
- **Workplace Innovation:** Leading the way in creating inclusive, future-ready work environments.
- **Talent Attraction and Retention:** Demonstrating your commitment to diversity, equity, and inclusion, making your organisation a destination of choice for top talent.

Leasing Options:

At Future of the Office, we offer a simple and flexible leasing option for the **NeuroPod**, designed to help you achieve your inclusivity goals without breaking the bank.

Benefits of Leasing:

- **Reduced upfront costs:** Preserve your capital budget and avoid upfront expenses.
- **Flexibility and scalability:** Easily adjust your leasing terms as your organisation's needs evolve.
- Access a **NeuroPod** with advanced features without the burden of high upfront costs, making it an affordable and flexible solution for your workspace needs.

Built for the Future

*The **NeuroPod** is not just a product, it's a catalyst for change, helping organisations create workplaces that are as diverse and dynamic as the people who power them.*

Contact our team today

Email: contact@futureoftheoffice.com

Phone: London +44 (0)20 3951 2678 Dublin +353 (0)1 442 8222

Let's build the future, together.

